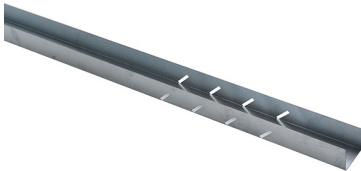








Product data sheet

Rigips door frame profile 50

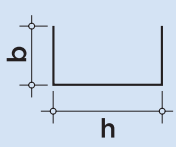


Product description: metal profile according to DIN EN 14195 made of sheet steel according to DIN EN 10346.

Area of application: Lintel profile for installation between CW or UA profiles in plasterboard systems. For door opening dimensions: 645 mm, 770 mm, 895 mm and 1,020 mm.

					
Oberfläche glatt	Korrosions- schutz Z100	Anwendung Innenraum	Baustoffklasse A1	Blechdicke 0,7 mm	Lagerung

Technical specifications

Parameters	Sign	Value	UOM	Drawing
Dimensions				
Metal thickness	t	0.7	mm	
Profile height	h	50.0	mm	
	Nominal	50	mm	
Profile width	b	39.8	mm	
	Nominal	40	mm	
Length	l	1,300	mm	

Parameters	Sign	Value	Unit	Certification
Material				
Type of material		Galvanised sheet steel		
Material		DX51D+Z		
Rust protection		zinc-plated		EN 14195
Surface		Smooth		
Type				
Type		UW75//40-06		DIN 18182-1

The information in this publication is based on our current technical knowledge and experience. In view of the many factors that may affect processing and application of our products, these data do not relieve the users of our products from the responsibility of carrying out their own inspections and tests, as they only represent general guidelines. They neither do imply any legally binding assurance of certain properties or of suitability for a particular application. It is the responsibility of those to whom we supply our products to ensure that any proprietary rights and existing laws and regulations are observed. We reserve the right to modifications in the interests of technical advancement without prior notice.

Product data sheet

Rigips door frame profile 50

Parameters	Sign	Value	Unit	Certification
Building material class				
Fire behaviour		A1		EN 13501-1
Notes				
Storage		Dry Air access		
Shelf Life		Unlimited		
Package Size		According to Pricelist		
Waste key number		17 04 05		

The values listed in this product data sheet only reflect the performance characteristics of the products. In addition, gypsum plaster systems have structural and structural properties, which can be found in our system documentation (e. g. Planen und Bauen).

The information in this publication is based on our current technical knowledge and experience. In view of the many factors that may affect processing and application of our products, these data do not relieve the users of our products from the responsibility of carrying out their own inspections and tests, as they only represent general guidelines. They neither do imply any legally binding assurance of certain properties or of suitability for a particular application. It is the responsibility of those to whom we supply our products to ensure that any proprietary rights and existing laws and regulations are observed. We reserve the right to modifications in the interests of technical advancement without prior notice.