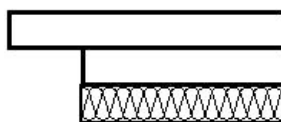


Rigidur Flooring Element 30 MF / 35 MF



The Rigidur Flooring Element with mineral fibre lamination (MF) consists of two factory-joined fibreboards with step rabbet and a laminated mineral fibre sound-insulation-board. Rigidur Flooring Elements are undercoat-varnished by factory.

Application: The Rigidur Flooring Element MF is universally applicable as dry screed for reconstruction and renovation purposes, in old and new buildings and for special fire and heat protection and sound insulation needs in the office and administration area.

Installation: According to Rigidur installation guide.

Technical Specifications

Product name	Rigidur Flooring Element	
	30 MF	35 MF
Rigidur assembly	2 x 10 mm + 10 mm MF	2 x 12,5 mm + 10 mm MF
Board thickness [mm]	30	35
Measurements (nominal size) [mm]	500 x 1500	
Classification according DIN 4102 approval P-NS04-339	A2, Non combustible	A2, Non combustible
Tolerance in board thickness [mm]	±1	±1
Area weight approx. [kg/m ²]	25,7	31,7
Maximum tolerance in length [mm]	-1/+0	-1/+0
Maximum tolerance in width [mm]	-1/+0	-1/+0
Maximum tolerance in diagonal [mm]	2	2
Surface hardness according to Brinell [N/mm ²]	≥35	≥35
Dilatation due to changing of relative humidity 30% - 65% (20°C) [%]/[%]	0,0015	0,0015
Thermal dilatation [mm/(mK)]	0,015	0,015
Stable moisture content at 20°C, 65% relative humidity approx. [%]	1	1
Heat transfer resistance R [m ² K/W]	0,39	0,41

Rigidur Flooring Element 30 MF / 35 MF

Fire protection and sound insulation values

Product name		Rigidur Flooring Element	
		30 MF	35 MF
Sound insulation Impact noise reduction in dB	Timber joist ceiling	8	8
	Concrete ceiling	22	22
Fire protection Fire resistance classes (Fire stress of the upper side of the Rigidur Flooring Element according to test certificate)	Rigidur Flooring Element MF	F90	F90
	Additional: Rigidur H ≥ 10 mm	F120	F120
	Or additional: Rigips levelling bulk material ≥ 20mm	F120	F120

Authorized point loads and application areas

Product name		Rigidur Flooring Element	
		30 MF	35 MF
Point load in kN		2,0	2,0
Application areas		1	1
Point load with additional layer Rigidur H ≥ 10 mm		3,0	3,0
Application areas with additional layer Rigidur H ≥ 10mm		1 + 2	1 + 2

Application area definition for Rigidur Flooring Elements

- Application area 1: Category in dependence of DIN 1055-3: A1, A2, A3, B1, D1
e.g. residential houses, corridors in office buildings, offices, day rooms, salesrooms up to 50 m² in comparable buildings.
- Application area 2: Category in dependence of DIN 1055-3: B2, C1
e.g. corridors in hotels, old people's homes, kitchens and treatment rooms inclusive operation rooms without heavy equipment, class rooms, coffee bars and restaurants.
- Application area 3: Category in dependence of DIN 1055-3: C2, C3, C5, D2, E1
e.g. corridors in hospitals, class rooms and lecture halls; cinemas, churches, theatres, lecture halls, entrance areas of public buildings and hotels, areas of factories and workshops with an easy operating, areas in retail stores and department stores.