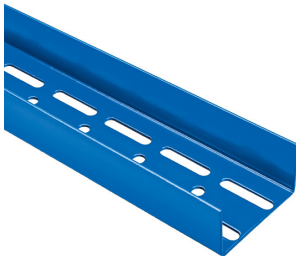


Product data sheet

Rigips reinforcing stud UA 75 - C3-high till C5-high

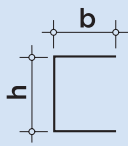


Product description: Metal stud according to DIN 18182-1 / DIN EN 14195 made of sheet steel according to DIN EN 10346 with a coating according to DIN 55634. Material tolerances according to DIN EN 10143. Corrosion category C3-high to C5-high according to DIN EN ISO 12944.

Area of application: For the construction of reinforced substructures in gypsum plasterboard systems especially in reinforced door openings for fire doors.

						
Oberfläche glatt	Korrosions- schutz	Anwendung Außenbereich	Anwendung Feuchtraum	Baustoffklasse	Blechdicke	Lagerung

Technical specifications

Parameters	Sign	Value	UOM	Drawing
Dimensions				
Metal thickness	t	2	mm	
Profile height	h	73.8	mm	
	Nominal	75	mm	
Profile width	b	39.0	mm	
	Nominal	40	mm	
Length	l	3,000 / 3,500 / 4,000	mm	
Profile parameter	I_{yy}	255,177	mm ⁴	

Parameters	Sign	Value	Unit	Certification
Material				
Type of material		Coated sheet steel		EN 10169+ A1
Corrosion protection		C3-high - C5-high		EN ISO 12944
Surface		Smooth		
Building material class				
Fire behaviour		A1		EN 13501-1

The information in this publication is based on our current technical knowledge and experience. In view of the many factors that may affect processing and application of our products, these data do not relieve the users of our products from the responsibility of carrying out their own inspections and tests, as they only represent general guidelines. They neither do imply any legally binding assurance of certain properties or of suitability for a particular application. It is the responsibility of those to whom we supply our products to ensure that any proprietary rights and existing laws and regulations are observed. We reserve the right to modifications in the interests of technical advancement without prior notice.

Product data sheet

Rigips reinforcing stud UA 75 - C3-high till C5-high

Parameters	Sign	Value	Unit	Certification
Miscellaneous				
Additional Note		Oblong perforation 8.2 x 40 mm, double row, center distance 34 mm		
Colour				
Colour		blue		
Notes				
Storage		Dry Flat and level Air access		
Shelf Life		Unlimited		
Form of delivery		According to Pricelist		
Waste key		17 04 05		

The values listed in this product data sheet only reflect the performance characteristics of the products. In addition, gypsum plaster systems have structural and structural properties, which can be found in our system documentation (e. g. Planen und Bauen).

The information in this publication is based on our current technical knowledge and experience. In view of the many factors that may affect processing and application of our products, these data do not relieve the users of our products from the responsibility of carrying out their own inspections and tests, as they only represent general guidelines. They neither do imply any legally binding assurance of certain properties or of suitability for a particular application. It is the responsibility of those to whom we supply our products to ensure that any proprietary rights and existing laws and regulations are observed. We reserve the right to modifications in the interests of technical advancement without prior notice.